

Relay Database V9.7 Maintenance Update

Please find enclosed the installation CDs for *ASPEN Relay Database™* version 9.7. This maintenance release contains fixes for all known bugs to date. You can use the enclosed CDs to update existing version-9 installations or to make new installations.

- Run \rdb\setup.exe on the 'Administrator' CD to create or update an administrator installation, which includes both the Relay Database Administration Program and the client files.
- Run \rdb\setup.exe on the 'Client only' CD to create or update a client installation on a workstation computer. *Note to Administrators: You can install this update on your computer and then run the Tool / Client Software Update command in the Client Program to make this update available to all other users. They will be able to update their executable files without running any setup program.*
- Run \rdb\websetup.exe on the 'Administrator' CD on an intranet web-server computer to create or update the Web Interface module.

This maintenance update requires no change in the database structure of existing ASPEN Relay Database version 9.

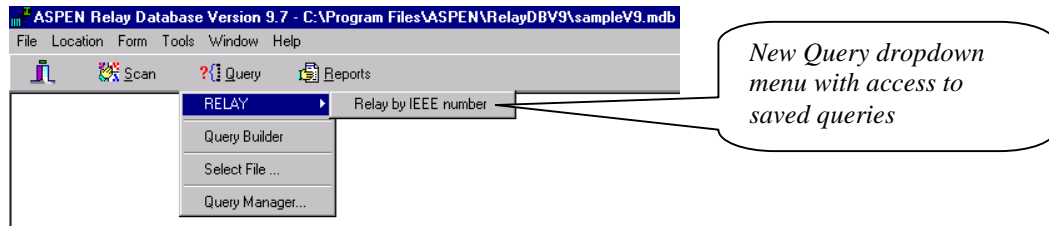
If you are using a version of the Relay Database prior to version 9, please consult the Administration Manual or on-line help for database update instructions.

Please write (support@aspeninc.com in English or scayres@aspeninc.com in Spanish or Portuguese) or call (650-347-3997) us if you have questions.

Newly added features between version 9.6 and V9.7

- **Additional file formats in Import Relay Setting command:** you can now import data from the following relays:
 - Areva:
 - Setting data for Px40/L series relays from clipboard.
 - Setting data for Px30/Px30C/Cx30/PG88/PG89 series relays in text file exported from S&R-103 software.
 - Setting data for Px20/Px20C/M/Modulex series relays from clipboard.
 - Siemens: Relay data from text file exported from SIPROTEC software.
 - ABB: Relay data from WinECP Save Metering File.
- **SEL-5030 comment field import:** You now have the option to include the comment field when importing SEL5030 setting data.
- **Active flag in setting template:** This flag allows you to archive old relay types. Only setting templates that you mark as active will be selectable when creating new setting requests.
- **Improved query wizard:** You can now use the wizard to build a query that locates setting requests having certain settings with given name and value. In previous versions, this type of search had to be built manually in the SQL editor.

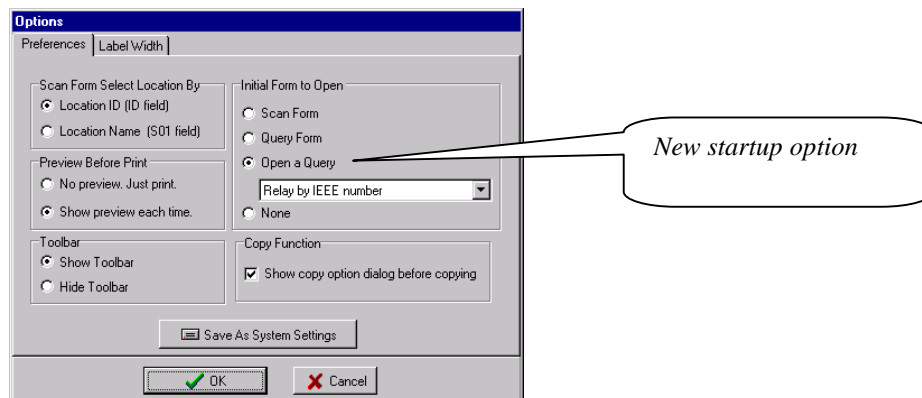
- **Improved print command in scan form:** The program now lets you select and print multiple records in the scan form.
- **Save query in the database:** Administrator can now save queries in the database to make them available to all users. The saved queries will be accessible from the new Query dropdown menu in the main screen of the client program.



- **Special requests for imported OneLiner relay data:** Version 10.11 of OneLiner has the capability of transferring relay parameters to the Relay Database. Any such data transfers will result in special requests with names in the form of 1L_xxxx, where xxxx is the name of OneLiner relay type. The templates for these special requests are hard-coded and cannot be modified by the user.
- **Populate requests with imported OneLiner relay data:** This command allows you to fill in relay setting forms with relay parameters that were transferred from OneLiner. This command maps OneLiner data to correct fields in the setting request using logic in user-customizable script programs.

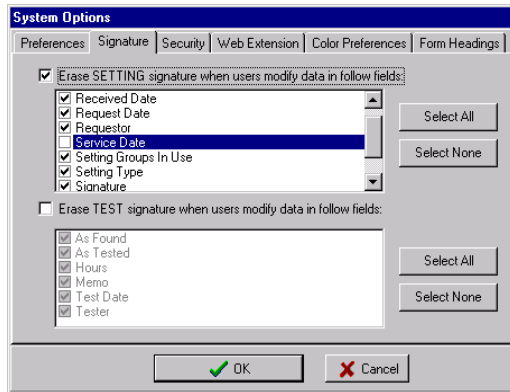


- **OneLiner relay data transfer configuration program:** This new utility program allows you to setup and edit data mapping scripts and selection rules that are used in data transfer between Relay Database and ASPEN OneLiner. Windows shortcut to run this program is found in the Start | Program | ASPEN DB V9 folder.
- **New program startup option:** You now have option to show user-defined query as the first screen after login to the client program.



- **Improved logic for saving data in setting form to the database:** The program now takes much less time to store to the database setting requests that have large number of setting rows.

- **New signature option in setting and test form:** You can now specify a list of setting- and test-form data fields where users can enter additional data without affecting the signature field on the form. In previous versions, the program automatically erased the signature field when any field in the form is changed.



- **Improved form layout in the Web extension:** The header portion of the scan form and setting form now stays unmoved when the when the form content is scrolled up or down in the browser. The header now also includes Location ID of object being displayed.

Bug fixed in version 9.7:

- Fixed a problem in the Administration program that prevented users from changing the status of a Setting field to Read-Write.
- Fixed an error in the client program that permitted users to modify the briefcase file event after it had been finalized.
- Fixed a bug in the script function UserGroup. The function always returned an empty string.
- Fix a problem in the briefcase synchronization logic that affected the contents of the Relay Type field.
- Fix a bug in the Change Password command in both the Administration Program and the Client Program.
- Fixed a problem that caused the Web Extension to timeout when displaying a form that contains more than 2000 rows.
- Fixed a problem in displaying data in edit boxes. If the field value contains a double quotes character, only the part before double quotes was displayed.
- Fixed a problem in sorting rows in the scan form in the Web extension. The sort order is not maintained when user click to go from one page to another.
- Fix a problem in the Adding New Record command in the Web extension. The command failed if Display Location ID option is not selected.
- Fixed a problem in the Web extension Edit mode. Users were unable to edit field contents if the field Active flag is set to "Required".
- Fixed an error in the Web extension for comparing setting request of relays that have only one setting request.
- Fix an error in the logic for comparing setting request to external SEL-5010 export file.